

PLACE2BE

Featherstone Primary School

2020: Our 4th academic year !

Place2Be has recently started it's 4th year at Featherstone Primary School. We are delighted to have the opportunity to continue to work alongside our dynamic school staff and our families in the Erdington community.

Testimonials

Parent: -"I'm so grateful for everything you've done for me and my family"

* "My child will not forget everything you've done for him, you've helped him more than he knows".

Children: *"Place2Be helps me feel better which is really important"

School Staff: *"We're really lucky to have Place2Be in our school, not every school has a Ciaran!"

*" I can't imagine what our school would be like without Place2Be now. "



Supporting children's wellbeing in your school.



Place2Be highlights:

Despite the impact of COVID-19, Place2Be has been able to offer key support to children and families. During lockdown, we were able to offer a parent check-in service, providing necessary guidance and resources to families across our community.

Place2Talk

Place2Talk sessions have been delivered throughout the year during break and lunchtimes. I am pleased to share that this year we have delivered:

475 sessions which supported **218** children to talk about worries, bereavement, friendships, self-esteem, SAT's and more.

One to One Counselling

We have had a phenomenal year supporting children and been able to support:

36 children by providing **507** counselling sessions in the academic year pre-COVID19 (19-20). Through creative materials, art and play, children have been able to process difficult experiences, feelings or thoughts.





Resources

<https://www.place2be.org.uk/our-services/parents-and-carers/coronavirus-wellbeing-activity-ideas-for-families/>

www.mentallyhealthyschools.org.uk

<https://www.place2be.org.uk/what-we-do/parent-carer-resources.aspx>

<https://youngminds.org.uk>

Your views

Place2Be constantly review their services in school and would love to work closely with parents and carers about improving the impact of our services.

Please direct any improvements, feedback or enquiries about how we can support your children to our manager via email: **ciaran.Brady@place2be.org.uk** or call the school office and leave a message for a chat.

Our Corporate work:



We would like to thank Duncan from Place2Be and Featherstone Primary School who facilitated a visit for one of our Corporate partners: Deloitte UK.

We were honoured for Nick Owen: Chairman of Deloitte, to see the vital support that we provide in schools, but more importantly to hear it from the children themselves !



2020: Find Your Brave

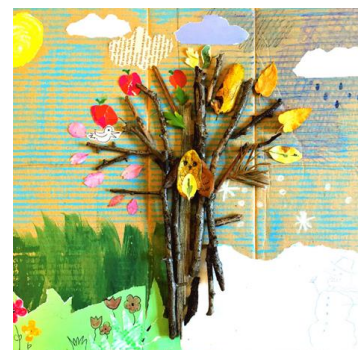
This year we explored the theme of bravery, what can stop us feeling

brave and things can try when new challenges feel difficult. We had a special challenge for our teachers as well ! This demonstrated that adults can find it difficult to be brave as well as children.

Like the rest of the world, Place2Be is adapting as coronavirus (COVID-19) impacts society and everyday lives:

We're working hard to ensure we can support as many children, young people and families as possible during this unsettling time.

Find out more at how we have continued to support families :



<https://www.place2be.org.uk/about-us/coronavirus-updates-advice-and-support/>